

Frederick Wilson Benteen Elementary School August 2022 GO Team Meeting

B³: Believe in Benteen's Brilliance

Andrew Lovett, Jr., Ph. D., Principal

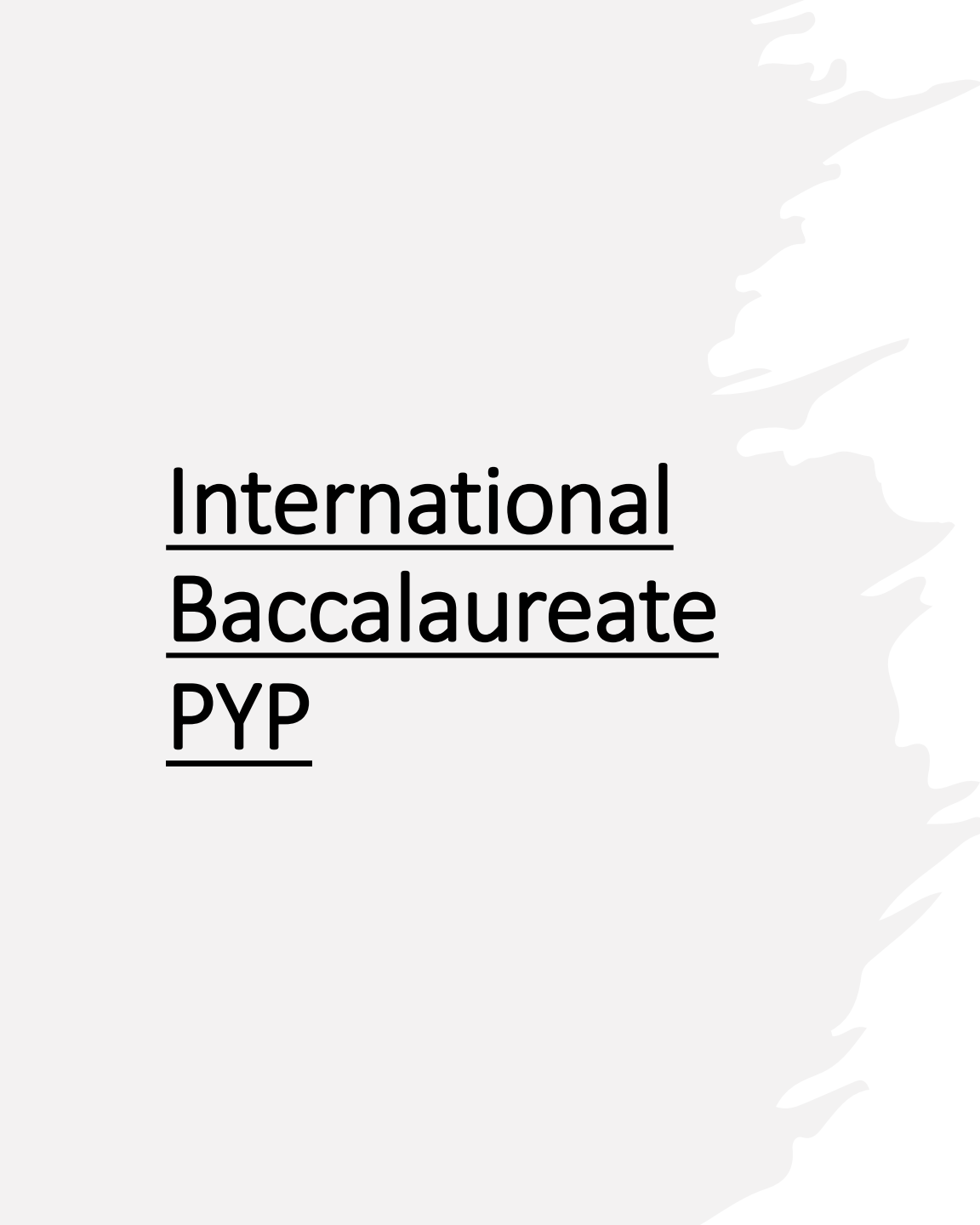
Christian Padgett, Ed. D., Assistant Principal



Vision & Mission

- Motto: **B³: Believe in Benteen's Brilliance**
- Theme: **Too Brilliant to Be Ordinary**
- Vision: **Frederick W. Benteen Elementary School is a school that provides a world class education that prepares students of today to be leaders of tomorrow.**
- Mission: **Our mission is to provide a comprehensive and rigorous curriculum that will prepare all students to be life-long learners and globally minded citizens, who are growing in academics, character, and leadership.**





International Baccalaureate PYP

Cluster Signature Program

- IB World Schools share a common philosophy—a commitment to improve the teaching and learning of a diverse and inclusive community of students by delivering challenging, high quality programmes of international education that share a powerful vision.
- The IB PYP prepares students to become active, caring, lifelong learners who demonstrate respect for themselves and others and have the capacity to participate in the world around them. PYP focuses on the development of the whole child as an inquirer, both within and beyond the classroom.
- Frederick W. Benteen is an authorized International Baccalaureate (IB) World School for the Primary Years Programme (PYP)
- Authorization: May 2021



Dual Language Immersion

Dual Language Immersion is a form of education in which students are taught literacy and content in two languages.

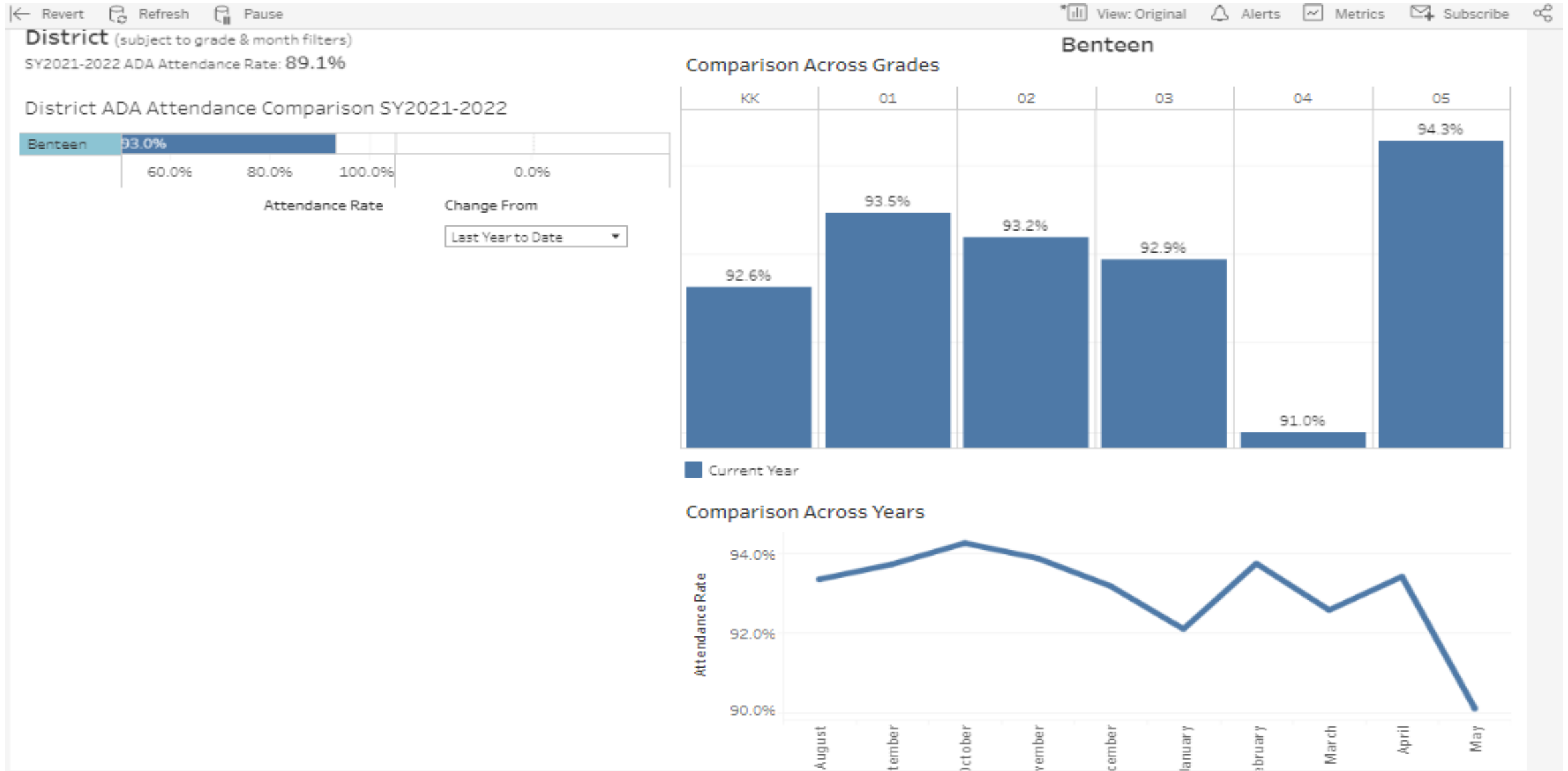
- Target Language – Spanish
- Inaugural Cohort entered 2018-2019 (Kindergarten)
 - Currently in grades PreK – 4th
- Benteen implements the Two Way Immersion Program where two language groups are schooled through their two languages.
 - K-4: Two Classrooms, Two Teachers, Two Languages, Every Day
 - PreK: One Classroom, One Teacher, Two Languages, Every Day

2021- 2022 Year in Review

- International Baccalaureate World School
 - Implemented & Reflected on 6 IB Planners
- Increased partnerships & Reactivated the PTA
- Launched a school steering committee with representation from the GO Team, PTA, Foundation, and staff
- Expanded Dual Language Immersion Program
 - PreK – 3rd Grade
- Georgia Milestones Performance
 - Increase in Developing & Above from 2019 to 2022 - 51.2%-53.2% **(+2%)**
 - Increase in Proficient & Above from 2019 to 2022 - 15% - 21.7% **(+6.7%)**
- Approved for a major \$10.2 million dollar renovation



Attendance Data – 93%



2022 – 2023 Behavior Data

Read Me | Suspension Comparison | Behavior Summary | Behavior Drill Down | SWD Suspensions | Tribunal



Behavior Summary SY2021-2022

Data as of: 7/24/2022 6:15:06 PM

Associate: (All) ▼

Cluster: Jackson ▼

School Type: ES ▼

School: Benteen ▼

School Year: SY2021-2022 ▼

Total Students
242

Total Active Students
217

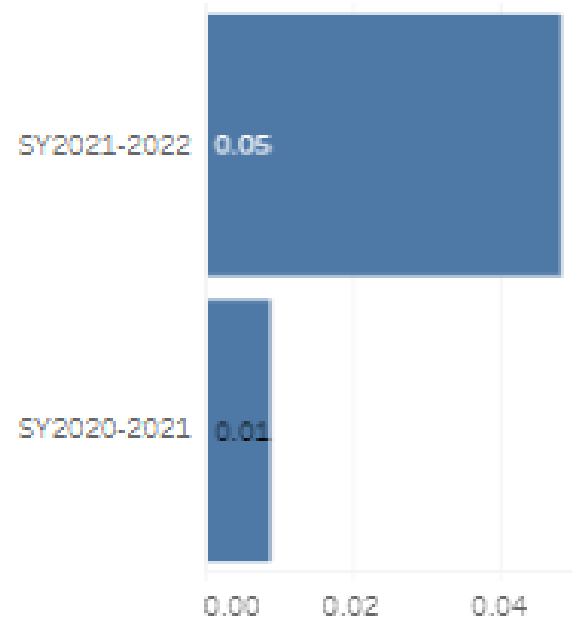
235 (97.1%) students with No OSS Day(s)

7 (2.9%) students with OSS Day(s)

Incidents by Time and Day

	Tuesday	Wednesday	Thursday	Friday
8AM-10AM	2			1
10AM-12PM		1	1	1
12PM-2PM		1	1	
2PM-4PM	2			

Suspension Rate



Suspension Total Student Counts

	General Ed.	SPED
2 Days OSS	2	1
1 Day OSS	1	3
0 Days OSS	2	1

Incident Status



Incidents by Student

232 (95.9%) students with 0 Incidents
8 (3.3%) students with 1 Incident
2 (0.8%) students with 2 to 3 Incidents

Incidents by Gender



Incidents by Grade

KK	0 Incidents
01	0 Incidents
02	1 Incidents
03	4 Incidents
04	3 Incidents
05	2 Incidents

School Start Update

2022 – 2023 Enrollment Projections

Grade	Projected Student Enrollment	Current Student Enrollment	Difference
Pre-Kindergarten		30	
Kindergarten	34	45	+11
1st Grade	29	39	+10
2nd Grade	29	32	+3
3rd Grade	50	51	+1
4th Grade	26	39	+13
5th Grade	29	23	-6
TOTAL	197	229	+32

Leveling

	D	E	F	G
1	FY2023 Leveling Change Request Form			
2				
3	Location Code	School Name		
4	5051	Bentzen ES		
6	FY2023 Projection	197		
7	Day 15 Enrollment	227		
8	Leveling Difference	30		
9				
10				
11		Leveling	\$	137,351
15		General Fund Carryover	\$	5,748
16		School Reserve Funds	\$	45,856
17		Net Adjustment:	\$	188,955
18				
19	Position Changes			
20	Add/Reduce	Position	FTE	Dollar Amount
21	Add	School Clerk II - 220 days	1.0	\$ 49,230
22	Add	Parent Liaison	0.5	\$ 22,100
23				\$ -
24				\$ -
25				
50		Total for Position Changes	\$	71,330
51				
52	NonSalary Changes			
53	Type	Account	Dollar Amount	
54	Stipends	Teacher Stipends	\$	10,000
55	OtherNonSalary	Contracted Services for Professional Development	\$	20,000
56	OtherNonSalary	Instructional Employee Travel	\$	5,000
57	OtherNonSalary	Signature Programming Travel	\$	15,000
58	OtherNonSalary	Student Transportation-APS Buses	\$	10,000
59	OtherNonSalary	District Funded Field Trips	\$	10,000
60	OtherNonSalary	Student Transportation-Charter Buses, Breeze Ca	\$	10,000
61	OtherNonSalary	Instructional Equipment/Furniture	\$	10,000
62	OtherNonSalary		\$	27,625
63			\$	-
64			\$	-
65			\$	-
66			\$	-
67			\$	-
68			\$	-
69			\$	-
70		Total NonSalary Changes	\$	117,625
71				
72				
73		Total For All Changes	\$	188,955

Strategic Plan

Mission: Our mission is to provide a comprehensive and rigorous curriculum that will prepare all students to be life-long learners and globally minded citizens, who are growing in academics, character, and leadership.



Vision Frederick W. Benteen Elementary School is a school that provides a world class education that prepares students of today to be leaders of tomorrow.

SMART Goals

Students in grades 3-5 will increase the level of Proficient and above students by at least 3 percent on the 2022 ELA GMAS

Students in grades 3-5 will increase the level of Proficient and above students by at least 3 percent on the 2022 Math GMAS

To further support whole child development, the school will increase the integration of SEL strategies throughout the school day amongst and between school stakeholders inclusive of students, staff, parents, and community, by May 2022.

APS Strategic Priorities & Initiatives

School Strategic Priorities

School Strategies

Fostering Academic Excellence for All
Data
Curriculum & Instruction
Signature Program

1. Increase staff knowledge of math and ELA/reading best practices to impact student learning.
2. Focus on student reading and language development.
3. Increase implementation and intersection of IB and DLI

- 1A.** Create instructional frameworks to guide math and ELA/Reading instruction
- 1B.** Strengthen language development with a literary focus on Interactive Read Alouds in ELA classes.
- 1C.** Reflect & Revise IB unit planners after implementation, especially for grades 3 & 4 as the DLI program expands.

Building a Culture of Student Support
Whole Child & Intervention
Personalized Learning

- 1 Develop a culture with an emphasis on Social Emotional Learning
- 2 Professionally develop the teaching staff by providing tailored, specific PD based on their collective and individual strengths and weaknesses

- 1:** Increase the amount of time allocated in the master schedule for SEL instruction
- 2:** Develop master schedule where teachers have collaborative planning opportunities to improve teacher efficiency in inquiry based instruction in all content areas.

Equipping & Empowering Leaders & Staff
Strategic Staff Support
Equitable Resource Allocation

- 1 Build capacity of staff around ELL learners and strategies
2. Build capacity of staff around tenants of IB

- 1:** Dual Language Immersion Program as the approved instructional model for ESOL students in grades K- 5 and provide opportunities and partnership with the EOSL/World Language Department for staff to become ESOL endorsed
- 2:** Create a matrix and schedule to ensure all staff are trained on IB annually.

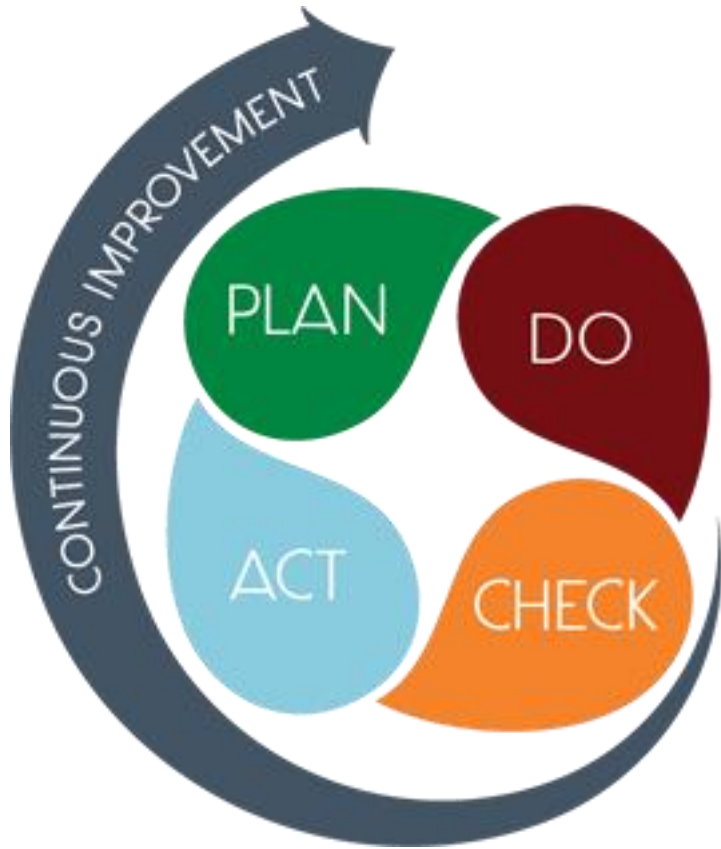
Creating a System of School Support
Collective Action, Engagement
& Empowerment

- 1 Build a school structure to provide support and opportunities for staff feedback

- 1:** Consolidate the lead team & pedagogical lead team into one governing body to streamline operation and structure for support

STRATEGIC PLAN

SMART GOALS



Overview

- Priorities
- Key Aspects

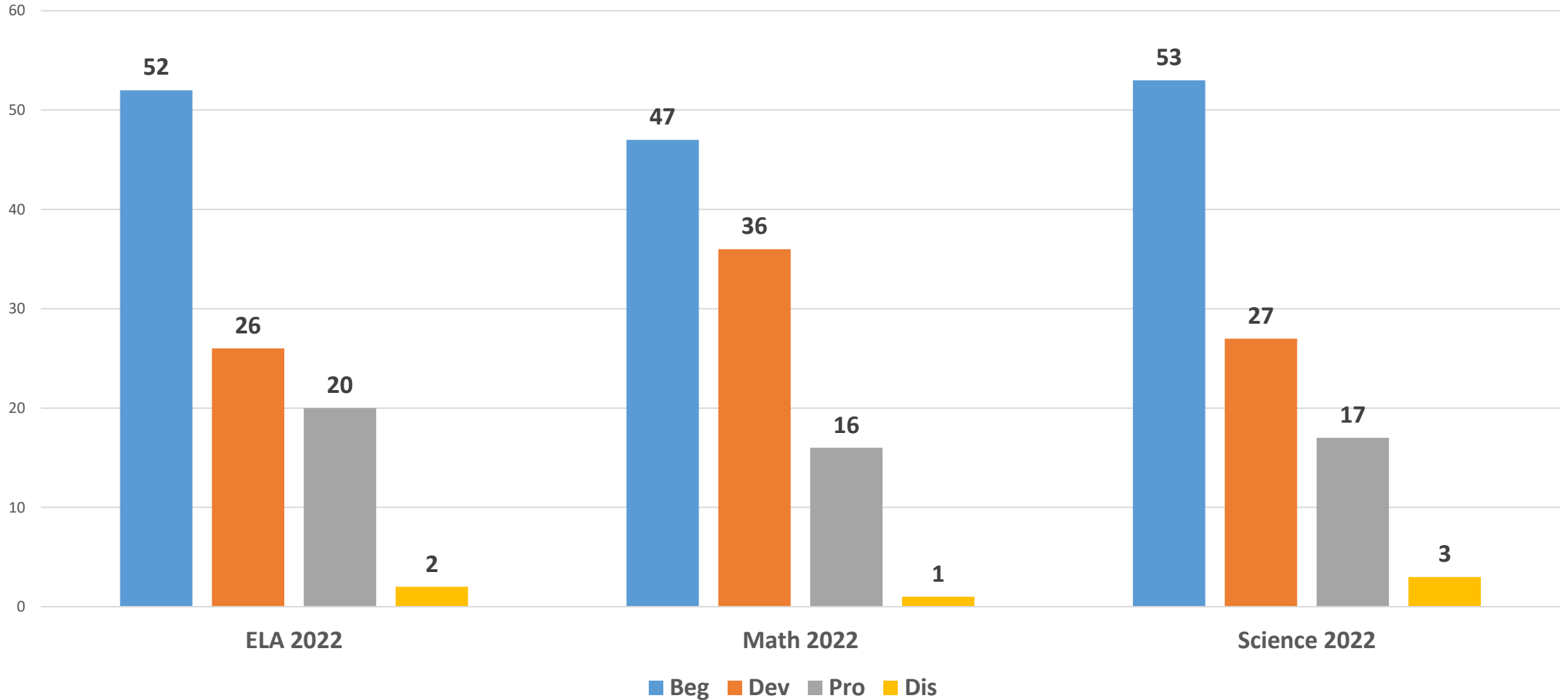
SMART GOALS

Continuous Improvement Plan SMART GOALS

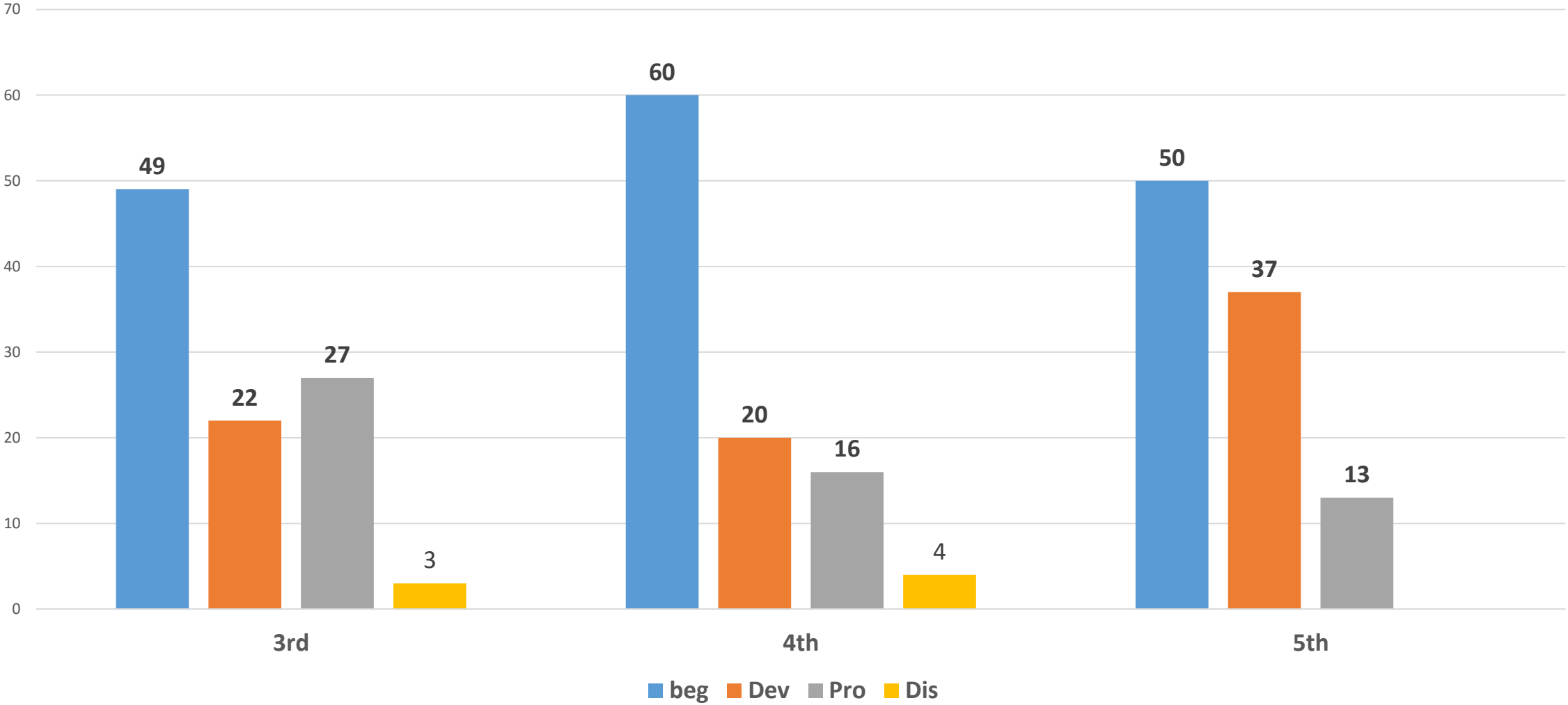
Our Overarching Needs		
Literacy: Increase the percent of students scoring proficient and above on the GMAS assessments in ELA by 5%.	Numeracy: Increase the percent of students scoring proficient and above on the GMAS assessments in math by 5%.	Whole Child & Student Support: Increase the ADA by at least 2% for students to support their academic achievement.
SMART Goals (Elementary/Middle School)		
By the end of the school year, the percentage of students scoring proficient or above on the ELA GMAS will increase by 5% from 21% to 26%.	By the end of the school year, the percentage of students scoring proficient or above on the Math GMAS will increase by 5% from 17% to 22%.	By the end of the school year, the ADA rate will increase by 2% from 93% to 95% as measured in APS Graphs.
Progress Monitoring Measures		
<ul style="list-style-type: none"> Weekly Data & Instructional Planning PLCs, Submission/review of instructional lesson plans, implementation of the coaching cycle (plan, observe, coach, model, Co-teach), common building assessments, universal screeners Monitoring of MAP data. 	<ul style="list-style-type: none"> Weekly Data & Instructional Planning PLCs, Submission/review of instructional lesson plans, implementation of the coaching cycle (plan, observe, coach, model, Co-teach), common building assessments, universal screeners Monitoring of MAP data. 	<ul style="list-style-type: none"> Care Team meetings Teacher submission of monthly call logs Daily contact by social worker and/or parent liaison to follow up with Homeroom attendance updates during the morning announcements Monthly attendance recognitions and celebrations

Georgia Milestones Assessment Results

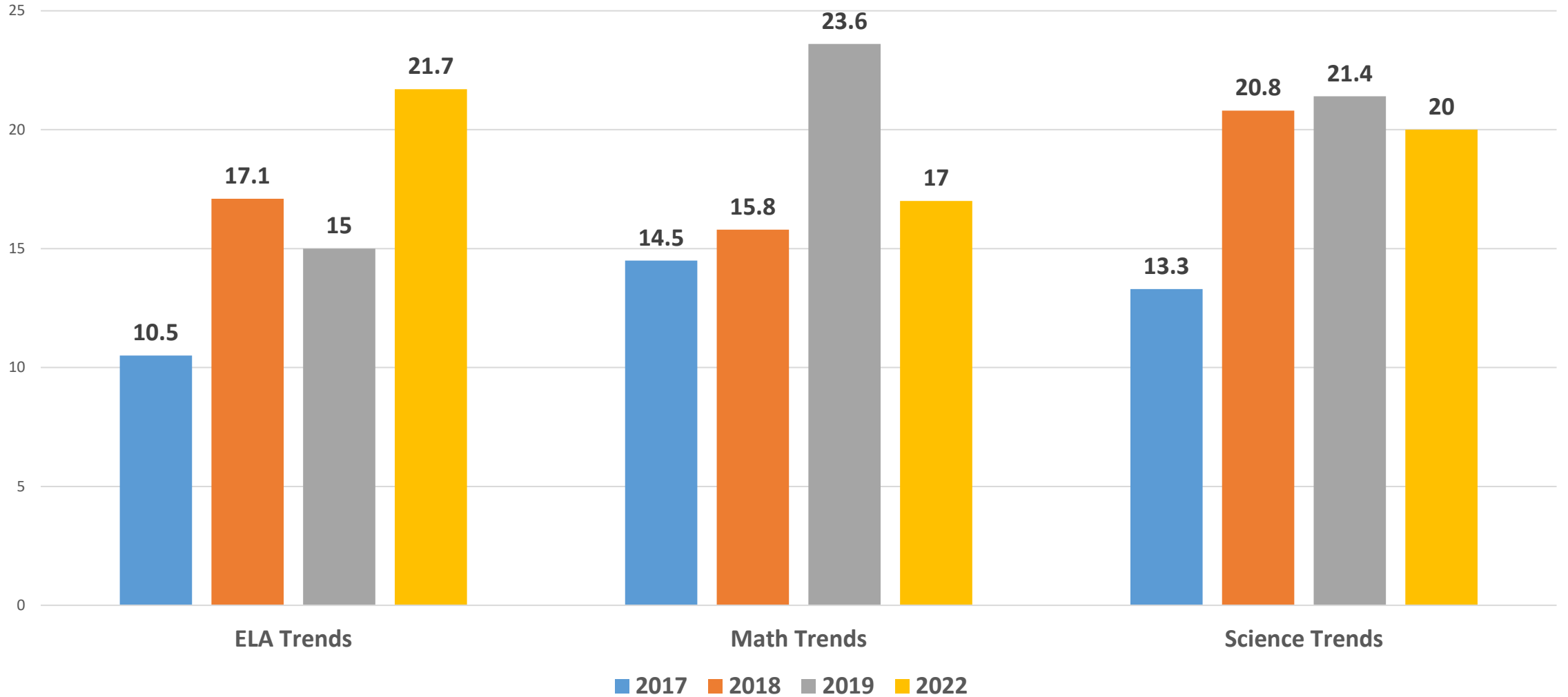
Benteen 2022 Overall Milestones



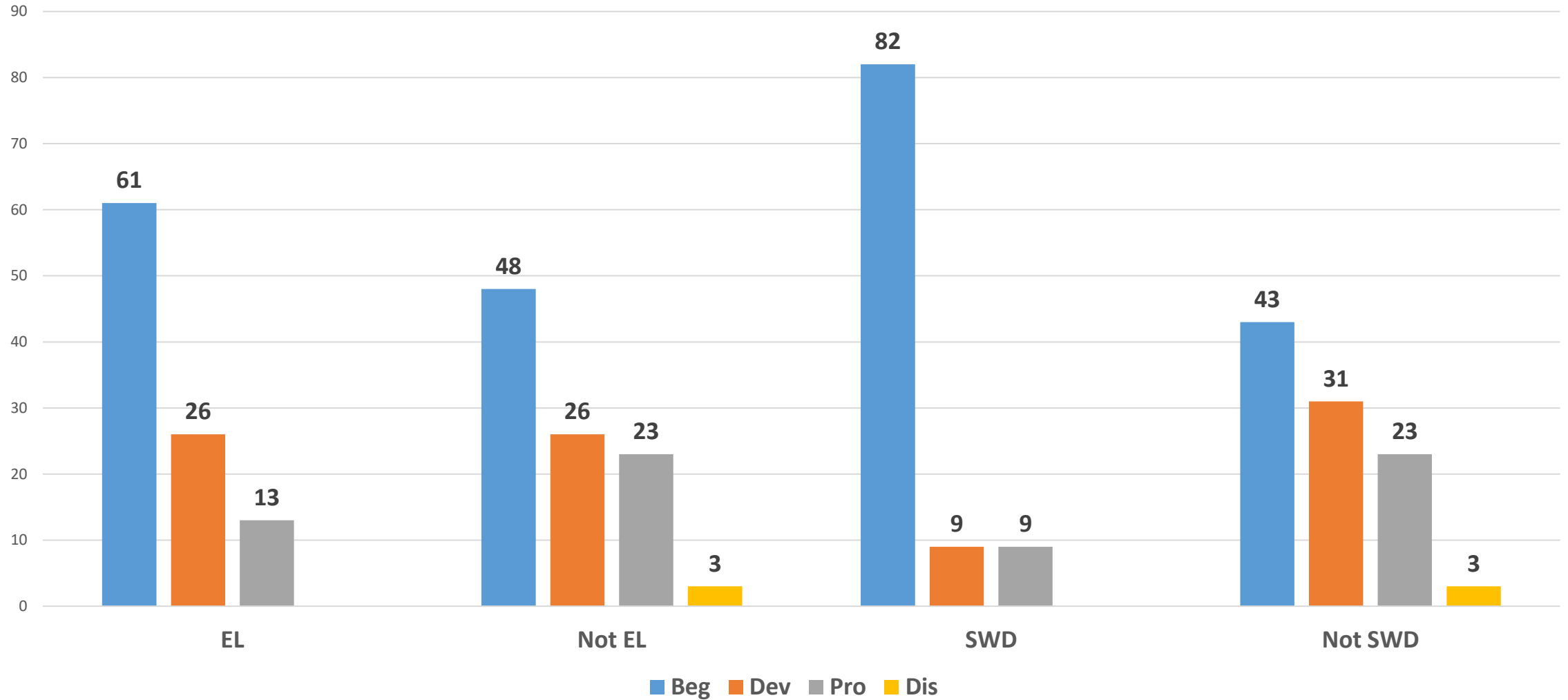
ELA Grade Level



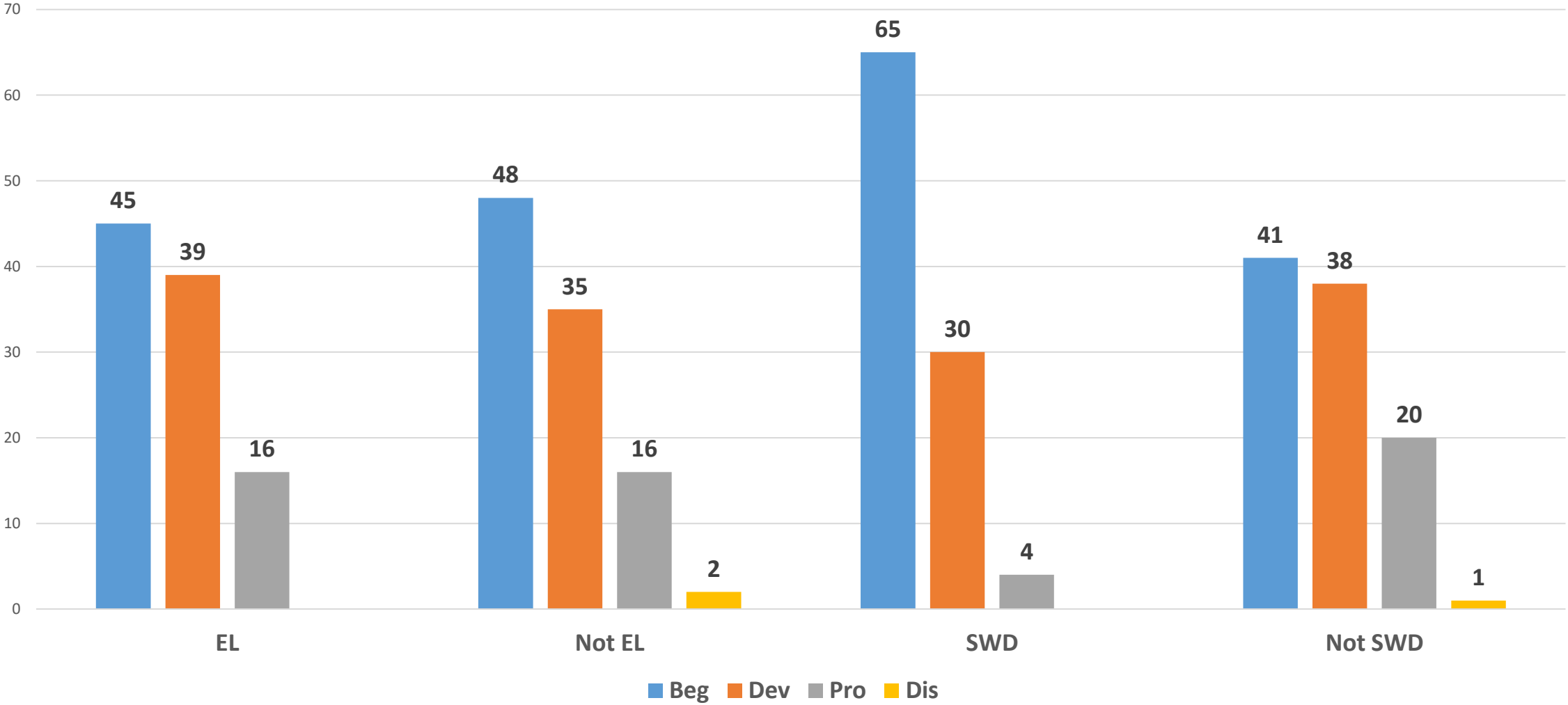
Benteen Trends Proficient & Above



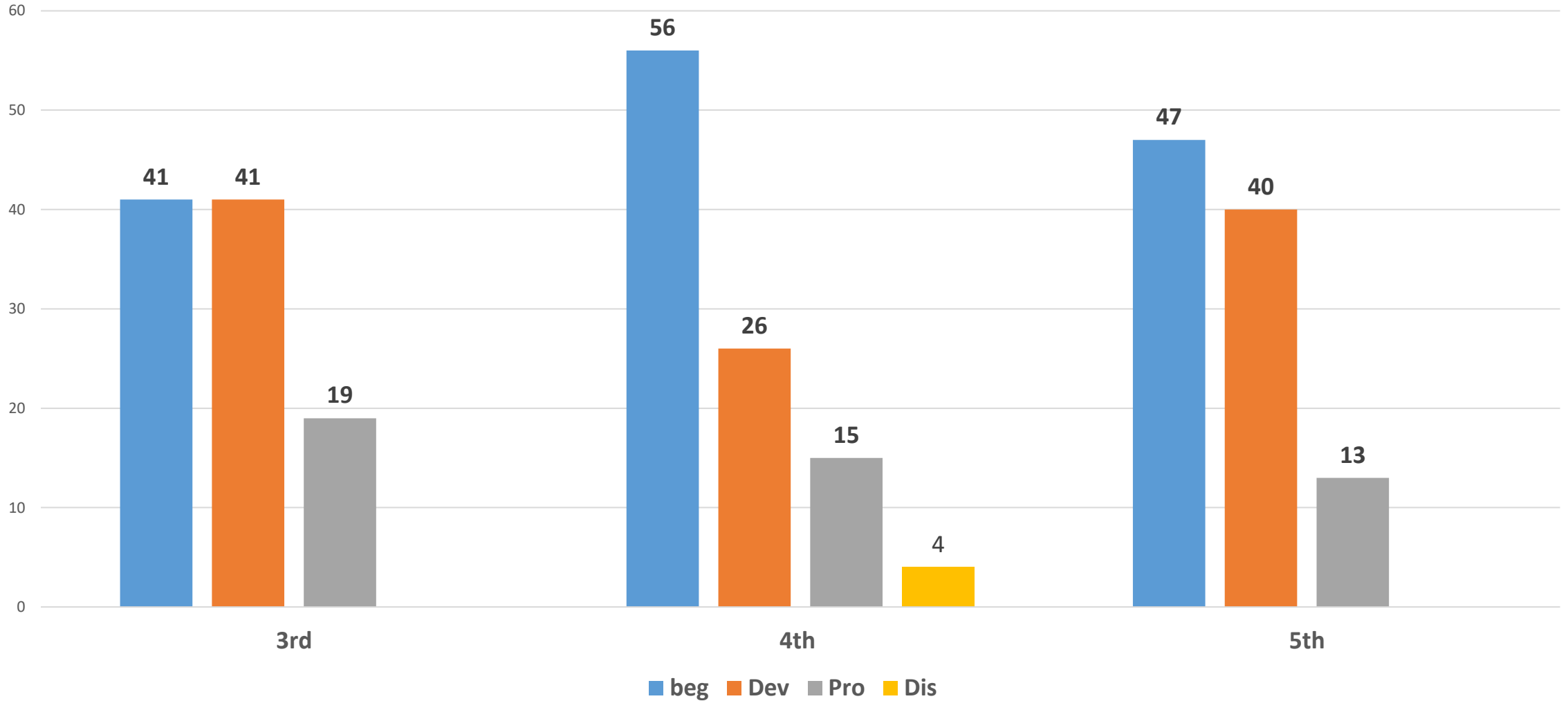
Benteen EL & SWD ELA



Math EL & SWD



Math Grade Level



Data Reflections

- What is one thing you already knew about the data?
- What is one thing you learned from the data?
- What is one thing you can do in your current role to help improve the data?
- Why is this important?

Administrative Team

Dr. Andrew Lovett, Jr., Principal

Dr. Christian Padgett, Assistant Principal

Ms. Chanel Free, Counselor

Mr. Samuel Jones, PYP Coordinator/Instructional Coach

Ms. Princess Smith, Instructional Coach

Front Office Phone (404) 802- 7300



Questions?